

NZLC WELLINGTON

STUDENT ACCOMMODATION OPTIONS 2020



NZLC Wellington is located in the heart of the city, with easy access to public transport. There are a variety of accommodation options to choose from, including:

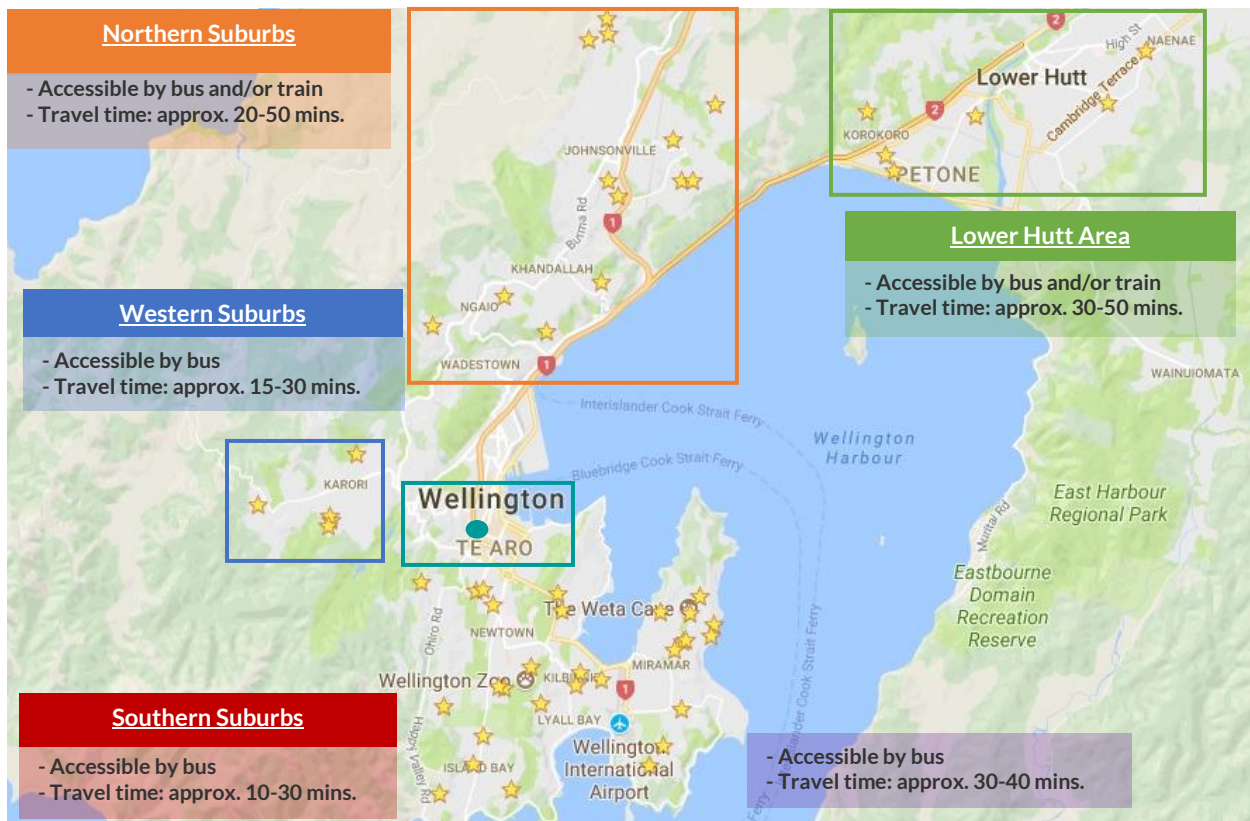
- ✓ Homestay
- ✓ City Accommodation
- ✓ Flattng

	Homestay	City Accommodation	Flattng
Cost per week	Half Board: \$290 (18 years +)	From \$395/w	\$160 - \$350/w
Minimum stay	1 week	2 weeks	Depends on flat (usually 3 -6 months)
Located in the city centre?	No	Yes	Depends on flat
Power included?	Yes	Yes	No (normally additional shared cost)
Internet included?	Yes	Yes (fees apply for additional data)	No (normally additional shared cost)
Food included?	Half Board: Breakfast and dinner every day + lunch on weekends	No	No
Furnished?	Yes	Yes	Depends on flat

HOMESTAY

Staying with a friendly and caring homestay family is one of the best ways to experience the Kiwi culture, and at the same time practise English outside the classroom. Our homestay families are very carefully selected and regularly inspected by our NZLC Accommodation Department.

Homestays are generally located 30 - 50 minutes travel distance by public transport. The map below shows the distribution of our homestays (marked by yellow stars) in the Wellington city region, and the estimated travel time between each zone and NZLC Wellington:



It is very important for us and the homestay family to know if you have any special requests or needs, so we can make your stay as comfortable as possible. **Please specify your requests on the NZLC Enrolment Form.**



Budget Option – Setup on Dixon

The **Setup on Dixon** is located in central Wellington CBD and offers an urban stay experience at a budget-friendly price. It is just a 5-7 minute walk from NZLC. All rooms include comfortable linen and are located near the shared bathroom facilities, communal kitchen and dining/lounge area. This accommodation is ideal for couples or solo travellers.

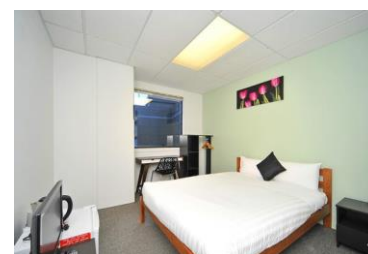
Room Rates: (Minimum Stay = 2 weeks (14 nights))

Room Type	Capacity	2020	2021
Double Room	1-2	\$395/week (additional night is \$57)	\$435/week (additional night is \$63)



Accommodation Facilities:

- Shared bathroom with toilet, shower and vanity unit.
- Shared kitchen has cooking facilities such as stoves, ovens, microwaves, Fridge and freezers. Please enquire at reception should you require cooking utensils.
- Shared laundry with ironing facilities and coin-operated washing machines and dryers.
- Shared lounge with dining table and chairs, sofas and Freeview TV.



Room Facilities:

- 1x Queen bed, desk, chair, clothes rack, LCD TV, Bar fridge and Tea/Coffee maker
- Bed linen and towels



Other Information:

Bond	\$200 refundable cash bond required at check-in and payable to the property directly
Cancellation	7 days' notice required. More than 7 days' notice: no penalty. Less than 7 days: 50% of one weeks' rent payable. All cancellations must be made in writing.
Damage	Any damage caused by guests will be charged at the time of check-out Lost key charge: \$63.25
Cleaning	Weekly service, including linen and towel change / Shared areas cleaned daily
Reception Hours	Monday – Saturday: 8.00am – 12.00am and Sunday: 10.00am – 6.00pm Check-in from 2.00pm and check-out by 10.00am
Wi-Fi Internet	Free Wi-Fi is limited to 1GB per room per day. Additional data at \$5 for 500MB, \$8 for 1GB, \$15 for 2GB, \$20 for 5GB

- All information is valid from 27 February 2020 – 31 December 2020
- Please note that, as this information concerns external parties to NZLC Wellington, prices and conditions may change without notice
- The photos above for the city accommodation options are for demonstration purposes only and some of the rooms may not have windows. The actual room you book may differ from the photos
- All bookings are subject to availability
- Above rates include water, power, weekly housekeeping and GST

Standard Option - The Setup on Manners

The **Setup on Manners** offers comfortable and affordable short-term and long-term accommodation in the centre of Wellington city, just a 5-minute walk from NZLC. Each apartment has its own kitchenette and ensuite bathroom. This accommodation is ideal for couples or solo travellers looking for a fully furnished studio in a great location.

Room Rates: (Minimum Stay = 2 weeks (14 nights))

Room Type	Capacity	2020	2021
Queen Studio	1-2	\$600/week (additional night is \$86)	\$650/week (additional night is \$93)

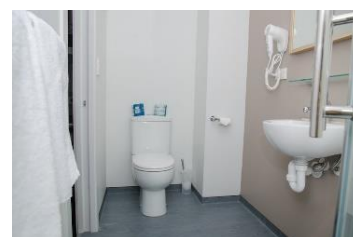


Accommodation Facilities:

- Shared laundry with ironing facilities and coin-operated washing machines and dryers.
- Shared balcony.
- On-site undercover car parking available at \$15 per night.

Room Facilities:

- Queen bed, desk, chair, wardrobe and SKY TV
- Bathroom with toilet, shower, vanity unit and hair dryer
- Kitchenette with microwave, kettle, toaster, fridge and cooktop
- Dishware, cutlery, cookware and cooking utensils
- Bed linen and towels
- Heater



Other Information:

Bond	\$200 refundable cash bond required at check-in and payable to the property directly
Cancellation	7 days' notice required. More than 7 days' notice: no penalty. Less than 7 days: 50% of one weeks' rent payable. All cancellations must be made in writing.
Damage	Any damage caused by guests will be charged at the time of check-out Lost key charge: \$63.25
Cleaning	Weekly service, including linen and towel change / Shared areas cleaned daily
Reception Hours	Monday – Saturday: 8.00am – 12.00am and Sunday: 10.00am – 6.00pm Check-in from 2.00pm and check-out by 10.00am
Wi-Fi Internet	Free Wi-Fi is limited to 1GB per room per day. Additional data at \$5 for 500MB, \$8 for 1GB, \$15 for 2GB, \$20 for 5GB

- All information is valid from 1 January 2020 – 31 December 2020
- Please note that, as this information concerns external parties to NZLC Wellington, prices and conditions may change without notice
- The photos above for the city accommodation options are for demonstration purposes only and some of the rooms may not have windows. The actual room you book may differ from the photos
- All bookings are subject to availability
- Above rates include water, power, weekly housekeeping and GST

FLATTING

You can rent a room in a house called a 'flat' that you share with other people. This is called 'flatting', and it is very common in New Zealand. This is a good option if you want to have freedom, yet live with a group of people. Living with people from other countries is a good way to practise your English and make new friends.

The cost of flatting will vary depending on the distance from the city centre, the number of people sharing, and the size and quality of the rooms. We advise students to organise a flat viewing to check the flat conditions. You can expect to pay anywhere between \$160 and \$350 per week for your room in the flat plus moving in costs, such as a bond and letting fee. You will also need to pay for expenses such as power, heating, internet and cleaning supplies.

This option is suitable for students who are planning to stay in the flat for a longer period (6 months or more). If you decide to go flatting, you can find a group of people you would like to live with and then go looking for a flat that will suit your group, or you can look for an existing flat that has a room available.

The table below is a sample budget based on an individual sharing with two other flatmates in a 3-bedroom flat:

Expenses	Cost per person per week
Rent	\$235
Power	\$15
Internet	\$10
Food	\$80
Shared household products (cleaning supplies, etc.)	\$5
Total	\$345

If you decide that flatting is the best option for you, it is a good idea to book either homestay accommodation or city accommodation for the first 2 - 4 weeks of your stay in New Zealand. This will allow you time to search and secure a suitable place.

Popular websites or Facebook groups to search for flats include:

- [Flatmates wanted in Wellington](#) (Facebook)
- [Flats and rooms to rent in Wellington](#) (Facebook)
- www.trademe.co.nz/flatmates-wanted
- <https://www.nzflatmates.co.nz/>
- <https://www.easyyroommate.co.nz/>

